

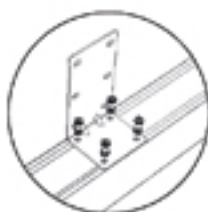
Car awning

Please read this instruction before assembly

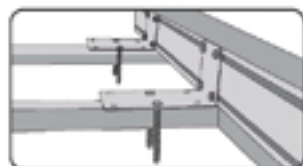
Instruction



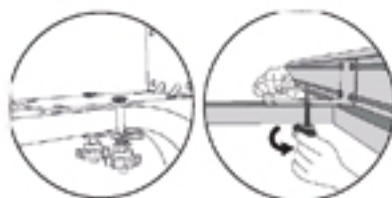
Install:



① Take out all the accessories, put 8 M8/L15mm screws on the M8 flat pad and spring pad respectively. Install the two L-shaped fixing parts on the M8 holes corresponding to the T-shaped slider on the back of the side tent respectively.



② Adjust the distance between the two L-shaped fasteners to be parallel to the luggage bar, pass the long screws through the L-shaped fasteners, and fix the long screws on the roof racks respectively.



③ Put a long washer on the bottom, then put on the M8 flat washer and spring washer, lock the M8 lock nut and tighten it.

Set up:



① Release the five Velcros at the front.



② Pull out the telescopic pole on both sides.



③ Extend the fabric.



④ Unscrew the pole and fix it firmly on the ground.



⑤ Insert the pin of the poles on both sides into the hole on the front horizontal pole.



⑥ Fix the poles on both sides with the webbing.



⑦ Pull out the guy line and fix it at a splay-out angle with the peg.

Fold down:



① Pull out the peg roll up guy line.



② Release the webbing in both sides.



③ Press buckle on both side poles, retract both side poles.



④ Retract both front poles.



⑤ Roll up both fabric and front pole together.



⑥ Put two side poles into box.



⑦ Fix the velcros.

Note: Fix all fastenings, supporting rods, guy ropes, the awning can be used at ease.

Website: <http://iwildland.com>

21cm

28.5cm